

Thank You for choosing C3 Softworks. We appreciate your business, and we value you as a customer. In an effort to make your first experience with our products an enjoyable one, please use this Quick Setup Guide to first familiarize yourself with our system and its components, and then let it walk you through the system setup so that you can quickly get started.

BRAVO!™ Click

Effective Audience Polling - In a SNAP!

Quick Setup Guide: Using BRAVO! Click

- | | |
|--|---|
| STEP 1 Installing your hardware | STEP 6 Select Number of Answers |
| STEP 2 Installing BRAVO! Click | STEP 7 Polling Your Audience |
| STEP 3 Initializing BRAVO! Click | STEP 8 Additional Options |
| STEP 4 Select Polling Options | STEP 9 How to Use Your Keypads |
| STEP 5 Starting Your Poll | STEP 10 Battery Replacement |



STEP 1 - Installing Your New Hardware:

There are three components to the **BRAVO! Click Audience Polling System**: Wireless Keypads, the Receiver, and **BRAVO! Click** polling software. To install the base station drivers, follow the process below:

INSTALLING YOUR NEW HARDWARE

Follow the Steps below to install the drivers from the CD provided or from the BRAVO! software directory located on your hard drive.

*NOTE: If you have previously installed either **BRAVO! Response** or **BRAVO! Click**, you can find the base station drivers in the following directory on your hard drive: C:\Program Files\C3 SoftWorks\BRAVO!\drivers -OR- C:\Program Files\C3 Softworks\BRAVO! Click\drivers.*



1. Connect the device to a spare USB port on your computer. If the following dialog box appears, select "Yes, this time only." And Click "Next" to proceed.



2. Choose "Install the software automatically" (recommended), and Click "Next".

3. The Wizard will now search.



4. The FT8U2XX device driver will install. Click "Finish".

5. WAIT! YOU ARE NOT FINISHED. THIS PROCESS HAS ONLY INSTALLED 1 of the 2 DRIVERS REQUIRED.

Please follow steps 1-4 again to install the USB Serial Port driver. After Clicking "Finish" on the current window, the "Found New Hardware" Wizard will appear again, prompting to install the USB Serial Port driver.

NOTE: At the completion of the installation, only the specific USB port that was used is configured with the drivers. We recommend repeating the above process for all the USB ports on the computer. To do this, simply plug the base into each USB port, one at a time, and repeat the above steps.



6. When completed, the "Found New Hardware" wizard will say the new hardware is installed and ready to use.

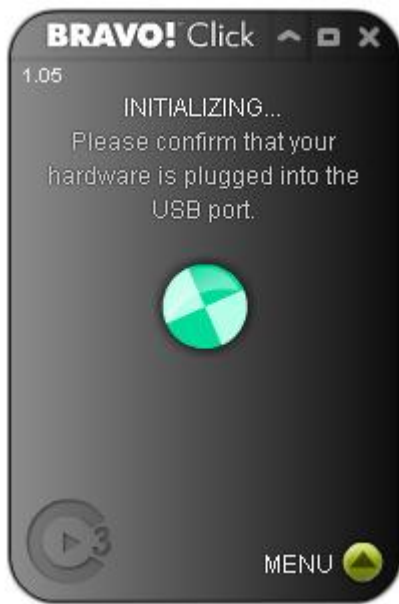


STEP 2 - Installing BRAVO! Click:

To install **BRAVO! Click**, place the CD into the DVD/CD-ROM, and wait for the software menu to appear. Follow the steps on the CD to install the software onto your computer. This software should also include any help files and/or manuals. Please contact support@c3softworks.com with any questions or technical support.

Once installed, you will be able to launch **BRAVO! Click** from the desktop shortcut or from the *Start/All Programs/BRAVO* menu.

NOTE: If you have previously installed BRAVO! Click, please skip this step.



STEP 3 - Initializing BRAVO! Click:

To get started using **BRAVO! Click** you will need to insert the USB Reply Receiver into your USB port. It may take a short time to initialize, as it communicates with the USB port. You do not need the receiver to set the options in **BRAVO! Click**.

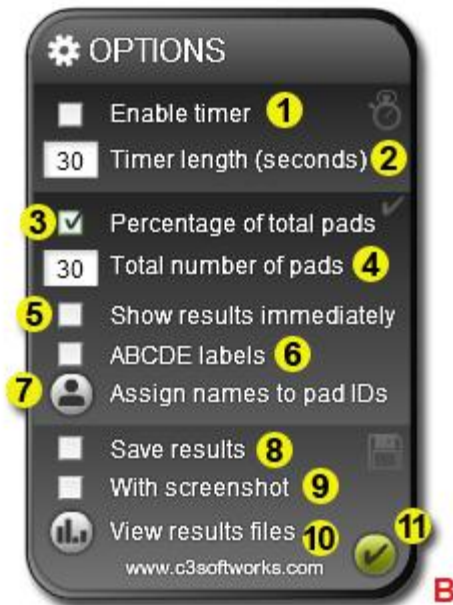
Once initialized, you can start using **BRAVO! Click** with any computer program. The **BRAVO! Click** interface will sit on top of any program.

NOTE: At anytime, click on the MENU button in the lower right hand corner. When opened, you have a variety of settings that you can preset for your use:





- ABOUT CLICK** - This option will display the C3 SoftWorks team.
- HELP** - This option will launch a Help document.
- DEACTIVATE** - This option will deactivate your BRAVO! Click license.
- OPTIONS** - This option will launch the polling options window.
- CLOSE MENU** - This option will close the Menu.



STEP 4 - Select Polling Options:

1. Enable Timer - To enable a timer during your survey or poll, check the box next to Enable Timer. The timer will begin as soon as the *NEXT* button is selected in **BRAVO! Click**.

2. Timer Length - To set the length of the timer, enter the amount (in seconds) in the space provided. The timer will be clearly visible on **BRAVO! Click** (Fig. E13).

3. Percentage of Total Pads - Selecting this option will calculate the percentage of responders based on the number of keypads you enter. For example, if I tell **BRAVO! Click** that there are 30 pads, and only half the class rings in, the percentages that show up in the results will add up to 50%. By leaving "Percentage of total pads" unchecked, **BRAVO! Click** will tally up the votes that it receives. If you have distributed 30 pads to your audience, and 25 out of 30 pads cast a vote, the percentage would add up to 100% even though you did not have a 100% of the audience ring in.

NOTE: On the left side of (Fig. E12) BRAVO! Click, will give you a visual gauge indicator of the votes placed. This gauge will only show up if Percentage of Total Pads is selected.

4. Total Number of Pads - To set the number of pads, enter the number in the space provided. **BRAVO! Click** will show what percent of the audience has voted.

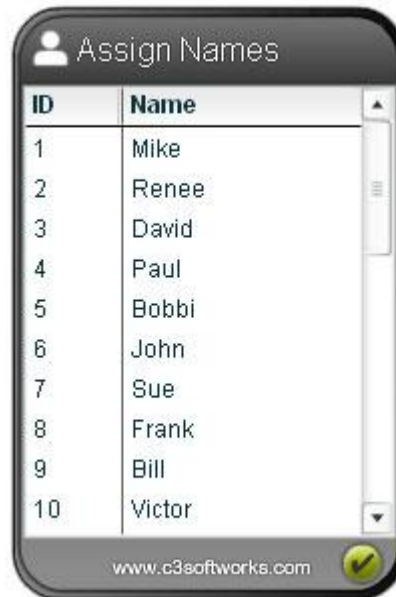
5. Show Results Immediately - Selecting this option will show the votes as they are sent by the ring in devices. If you want to reveal the results of a poll at your discretion, then leave this option unchecked. Otherwise the audience will see in real-time how others are voting.

6. ABCDE Labels - Selecting ABCDE Labels will show A,B,C,D,E as available answer options. Un-checking ABCDE Labels will show 1,2,3,4,5 as available answers during the game.

7. Assign Names to Pad IDs - This option will allow you to assign

a name to each ID which will aid in tracking results to a specific student. To get started, click on the "Assign names to pad IDs" icon.

Once open, you will see a 2-column screen as shown here. In the left column, you may assign a pad ID. In the right column, you have the option of assigning a specific name to a corresponding pad.



There are 2 options for entering the IDs:

1. Default - Accept the default pad ID's which are set to: 1-30.

2. Manually - Enter the ID of each pad (located on the back under the address). Once you have entered the ID in the left column, you can then click on the right column and assign a name to that keypad.

NOTE: You do not have to enter a name to correspond with a keypad ID.

8. Save Results - To save the results during a survey or poll, check the box next to Save Results. This will save the results as an html file to the My Documents directory in a folder called: **BRAVO! Click**. These results are automatically saved and can be previewed at a later date.

9. With Screenshot - If you select "With screenshot", this will take a snapshot of the screen on your computer so you can view the image/question along with the data. To view the results of

your polling, click on the View results files icon. (Fig. B10) This will show you all of the data files for your polls, organized by name of the poll, date, and the time you closed **BRAVO! Click**.

10. View Results Files -This option will open the saved html results file.

11. Return Button -This option will return to the New Poll screen.



STEP 5 - Starting Your Survey/Poll:

After setting all desired options for your poll, you should see a large green button on the opening screen, labeled *NEW POLL*. Click the *NEW POLL* button to begin your survey/poll.

*NOTE: Before you poll your audience you may want to change or adjust your options by pressing the *OPTIONS* in the lower right hand corner. [\(SEE STEP 3\)](#)*



STEP 6 - Select Number of Answers:

After selecting the *NEW POLL* button, you will then be asked to select how many answers you would like in your poll. Select the number of answers you wish to display for your poll.

BRAVO! Click will automatically go to the next screen and poll your audience.



STEP 7 - Polling Your Audience:

12. Participation Gauge - Gives the audience a visual gauge indicator of the votes placed. This gauge will only show up if *Percentage of Total Pads* is selected.

13. TIMER - Timer length indicated by a numerical value of how many seconds are left for the current poll.

14. NEXT - When ready to do a new poll with the same number of answers as the previous poll, click *NEXT*.

15. NEW - If you want to change the number of answers for your next poll, click on *NEW*.



Additional Options:

At anytime during your poll, you may want to resize or move the **BRAVO! Click** window. This can be done by selecting any part of the **BRAVO! Click** window and drag it to where you'd like it to sit. Other options include minimizing, maximizing and closing the **BRAVO! Click** window.

16. Minimize - Click on the (^) button on the upper right to minimize the window. After minimizing the **BRAVO! Click** window, you'll notice **BRAVO! Click** will reduce down to a simple **BRAVO! Click** bar, allowing you to easily move **BRAVO! Click** to a more convenient location.



17. Maximize - Click on the (□) button on the upper right corner, this will resize the device to almost twice its size.

18. Closing BRAVO! Click - Click on the (X) image to close, just like you would with any program.



How to Use Your Keypads:

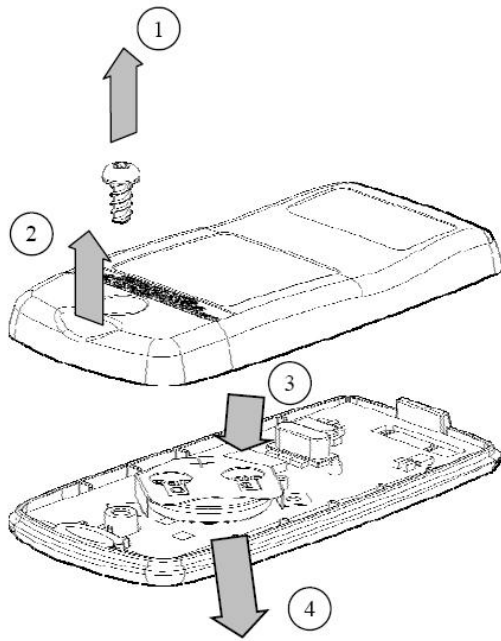
Powering ON - Any key will turn on the keypad. After about 12 seconds, the keypad will automatically power itself off. The keypad will turn off after successfully sending a vote.

Voting - Make sure a USB Port (base unit) is ready to collect votes.

There are five number keys that correspond to values 1-5. When pressing any key, the Green LED will light to indicate the keypad has turned on.

The keypad listens for a signal sent from the USB Port (base unit) on the same Base ID/Channel. If successful, the green LED will turn off. A low battery warning may present itself after the keypad has voted. The battery warning is the red LED will blink quickly 4 times.

If the keypad is unable to send the vote after a period of 9 seconds, the Red LED will light to indicate the transfer was unsuccessful. There are several reasons a vote is not able to transmit. First, the Base ID of the base may not be set to the keypad. Second, the base may not be querying the keypad (system not set up to poll enough keypads or possibly even polling) or the keypad is out of range of the base unit.



Keypad Battery Replacement:

Each keypad is powered from a single CR2032 Lithium Coin cell battery. One fresh CR2032 battery can last for up to 20,000 votes.

INSTRUCTIONS

1. Remove screw from case back.
2. Separate case parts at screw location.
3. Carefully push the battery out of the retainer from the back side.
4. Slide in new battery with positive side away from circuit board.



info@c3softworks.com | 888-333-1969 | www.c3softworks.com